

Modular Houses



MSDconstruction
no limits creations.



We are MSD Construction Ltd., a greek company operating in the field of aluminum systems for doors and windows, as well as panels, for more than 25 years.

The R&D department of our company is constantly working on innovative project ideas for products of a new philosophy, completely based on groundbreaking technology. This way, we provide unique brand-new products of high technical and aesthetic standards.

The most vital part of our company is the Human Resources. We are a young group of people working passionately for a common goal: the satisfaction of our customers' needs.

We follow the trends of construction and we pioneer while using materials of high technology, that give bioclimatic characteristics to the final construction project.

We build modular houses of maximum durability through time and we provide many different architectural solutions.

Our mission is to bring an innovative direction in our business field, which is the direct approach to customers, while in the same time, we provide them with high quality products and technical advice.

Finally, we are proud to present our innovative technology for Modular Houses. Discover our new panels, profile designs, materials and their advantages from lower costs to high antiseismic behaviour and great aesthetics.

MSD Construction
no limits creations.



Full barrier



High performance



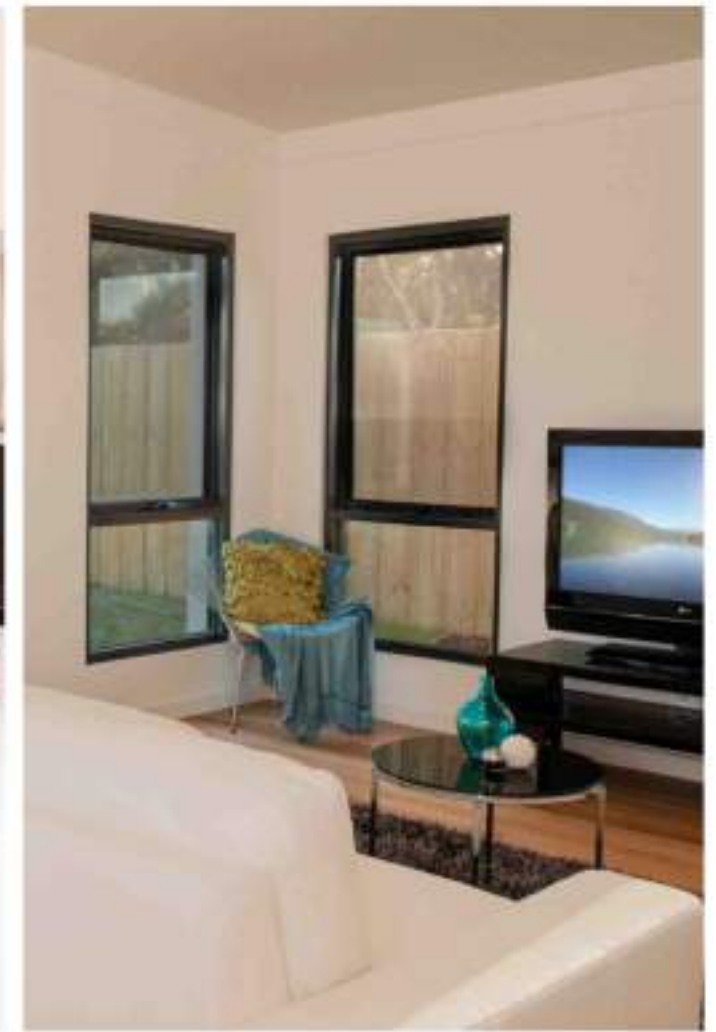
Deflects heat



Anti-termite



Open plan living



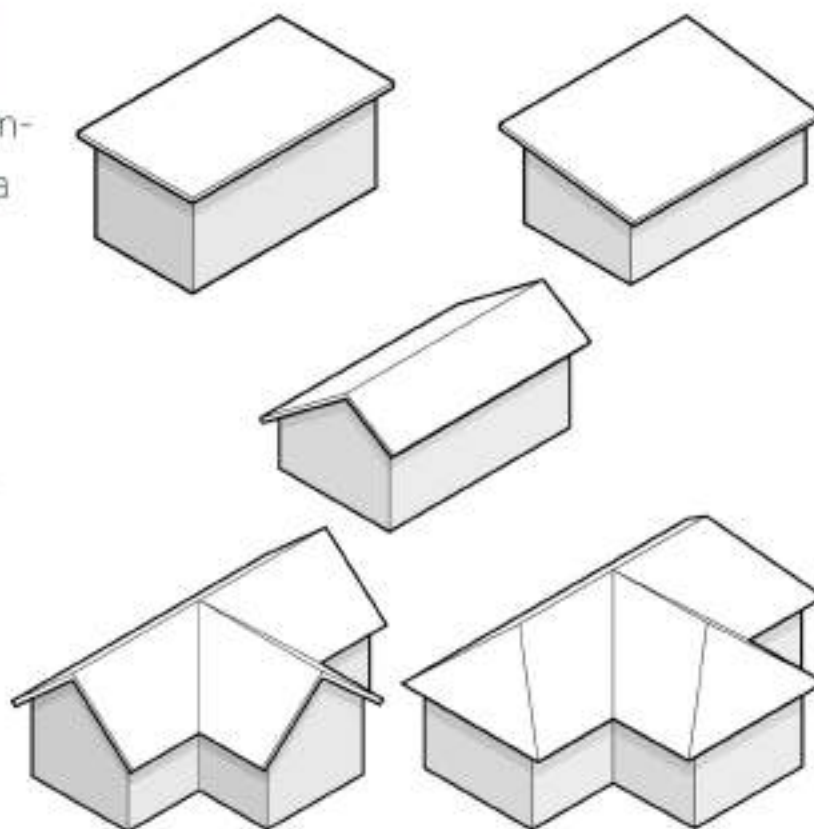
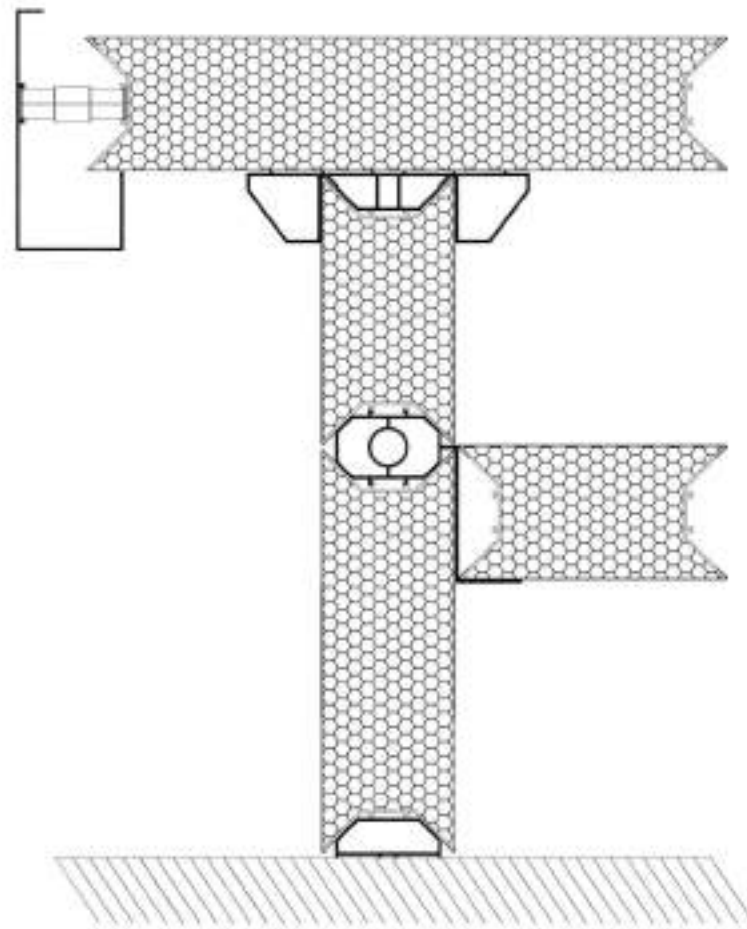
The modular houses are constructed by **maximum standards**. Each modular house has been **tested** for its statics, quality of construction materials, its finish and final aesthetic result.

MSD Construction brings you **brand new panels and profiles series**, in order to facilitate all architectural demands.

The combination of the profiles and panels in construction, provides you with the opportunity to design a house of **any geometrical form**.

The construction process is **quick and low-cost** and you can decide the final aesthetic result without limitations. You can choose between a great amount of **colors** for the interior and the exterior of the house.

Furthermore, we support the construction of **one additional floor**, thanks to the specially designed connection profiles.



smarter quicker leaner greener

Our panels are of new and ground-breaking technology. They are suitable for interior and exterior applications for walls and ceilings.

We provide them precolored in colors of your choice, plus we give you the option to decide if you like different colors for the interior and the exterior of the house. Also, you can choose between basic colors or special effects (see color chart p.13).

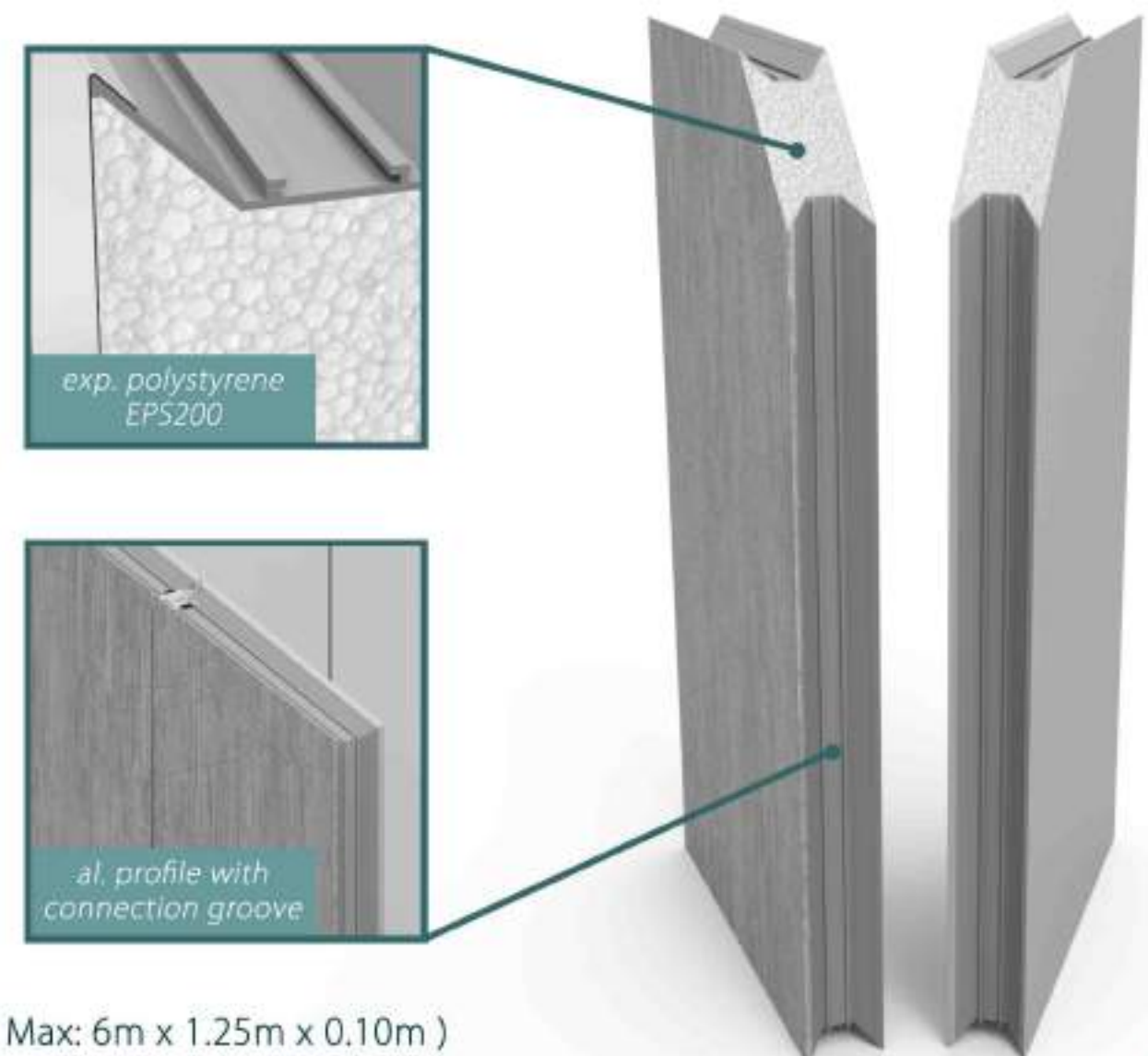
The panel contains expanded polystyrene of EPS 200 thickness. The interior and exterior surfaces are

made of powder-coating precolored hot dip galvanized sheet (0.5mm thickness) and the panels total thickness is 100mm.

This panel can be made in various geometrical shapes, so it is suitable for all kinds of architectural demands.

SPECIFICATIONS

Width	1,250mm
Thickness	80mm - 120mm
Steel thickness	0.5mm
Core material	HDG EPS 200



(Max: 6m x 1.25m x 0.10m)

THE 10 ADVANTAGES

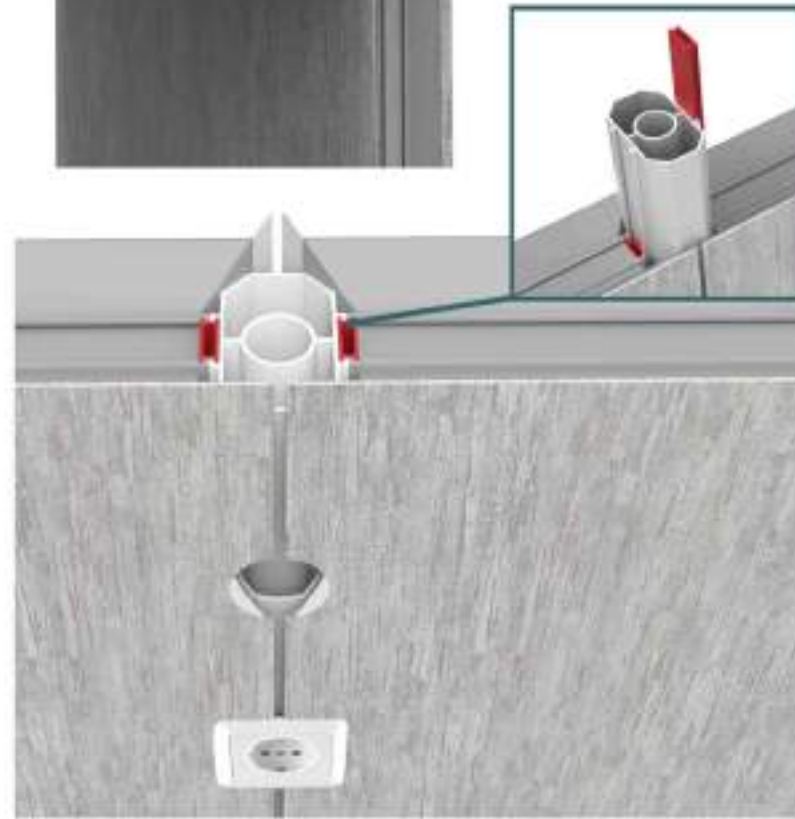
1. Lighter
2. Soundproof
3. Thermal insulating
4. Excellent flatness
5. Fast assembly
6. Sunproof
7. Humidity-proof
8. No screws needed
9. Electr. preinstalled
10. Plumb. preinstalled



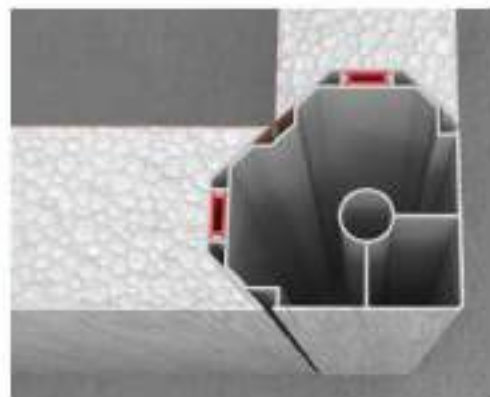
There can be **differently leveled roofs**, thanks to the specially designed connection profiles and wall panels.



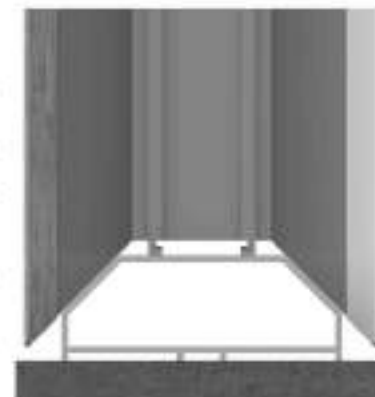
The panels are quickly connected in construction, using the connection profile in between and inserting the connector from the upper side. This way we achieve the **perfect fitting**. All electricity cables run through the connection column, so it is **easy to open holes for sockets**.



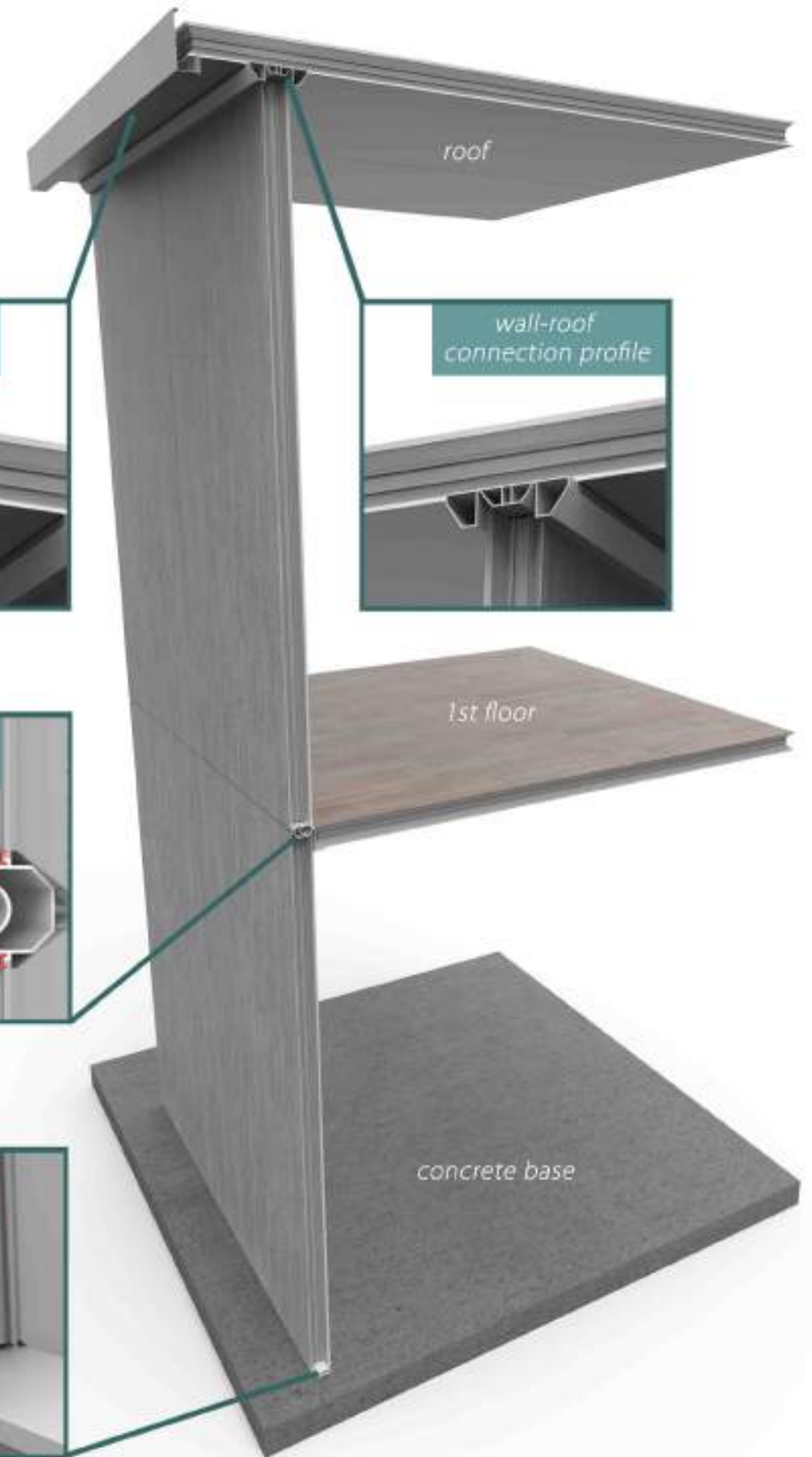
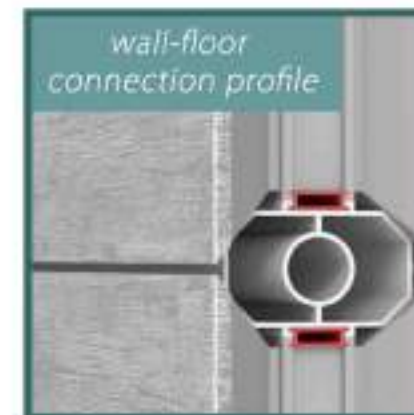
The **corner connection** is done in the same way, using a corner column profil.



The inclined sides of the base profile "auto-center" the wall panels system.



The roof cover serves as a rain gutter as well.







With MSD Modular Houses, you choose:

- Low-cost construction
- Quick installation
- Durability in time
- Energy saving
- Certified and ISO tested materials
- Great heat insulation, soundproofing, fireproofing, humidity protection
- Great anti-seismic behavior
- Zero need for maintenance
- Easy and low-cost transfer
- No limits architectural design
- Perfect aesthetic result



Color chart



Cost estimate

The following cost estimate refers to the construction of a modular house of average luxury standards and area surface 100 m² or total surfaces 300 m².

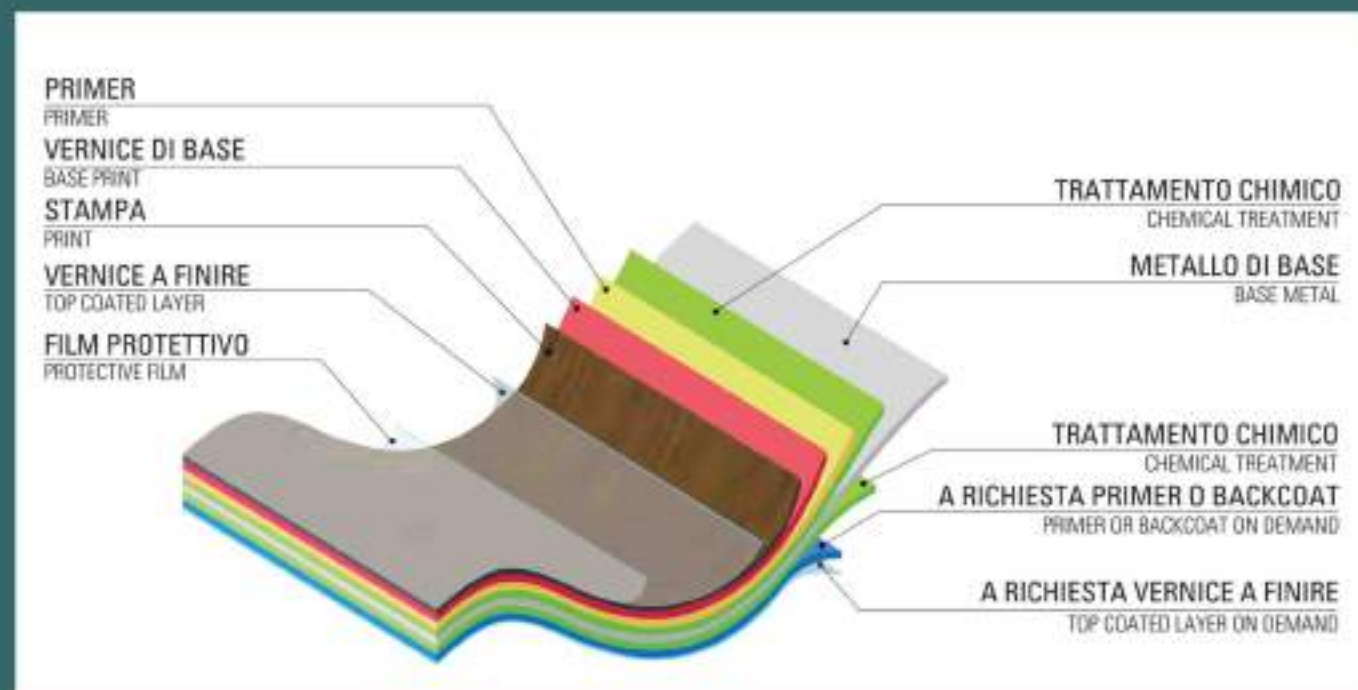
The sale price for such a modular house is _____.

In the above price the panels and the following **ARE** included:

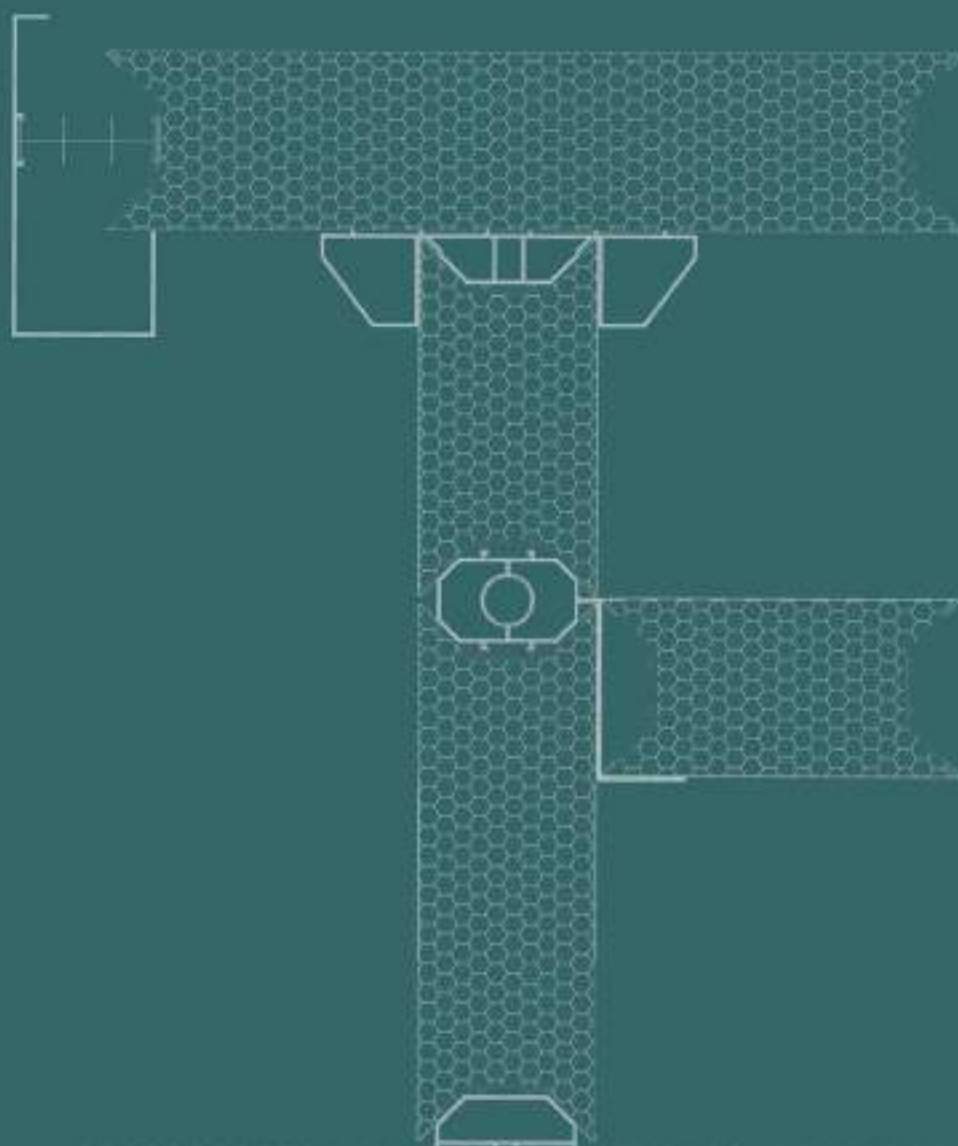
- 7 exterior aluminum frames
- 5 interior wooden doors
- Electric installation
- Plumbing installation
- Rain gutter
- Kitchen cabinets and bedroom
- Sanitary ware
- Floors (ceramic tiles)
- Aluminum profiles (columns), necessary for the connection of walls
- Installation of all the above

The following are **NOT** included:

- Delivery cost to the place of installation
- Concrete base
- Appliances
- Skirting board
- Frames
- Railings
- Lightning rod
- Exterior veranda tiling (if required)
- Heating and cooling unit
- Solar and electric water heater



varcolor There are more colors available in Valcolor's collection.



MSDconstruction

no limits creations.

Visit: www.msd-construction.gr/en

Contact: info@msd-construction.gr

or +302130244000